

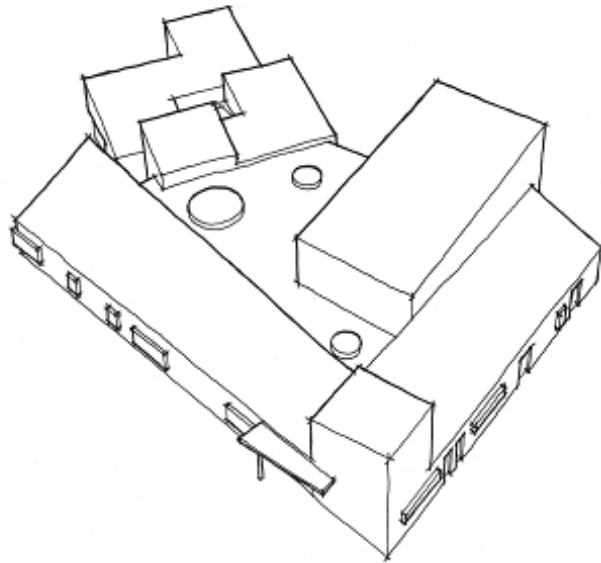
Woodmuir Primary School, West Lothian

For West Lothian Council

ARCADE Architects were commissioned by West Lothian Council in March 2005 to carry out a feasibility study to examine the options for providing a new school in Breich on two possible sites identified by the Council. The existing school was to remain operational until the new school was built.

Site 1 was an L-shaped piece of ground lying adjacent to the existing school, on land identified for potential development. The intention was to incorporate the site of the existing school as part of the grounds of the new school, once built. Two options for locating the new school building either to the west or the south of the existing school were appraised.

Site 2 was an existing playing field lying to the south of Woodmuir Place, behind the existing houses accessed via an existing gap between houses. Again two options for the new school were appraised, this time based on varying the orientation of the school on the site.



OVERVIEW



PLAN

Quantity Surveyor:
Structural Engineer:
Service Consultant: