

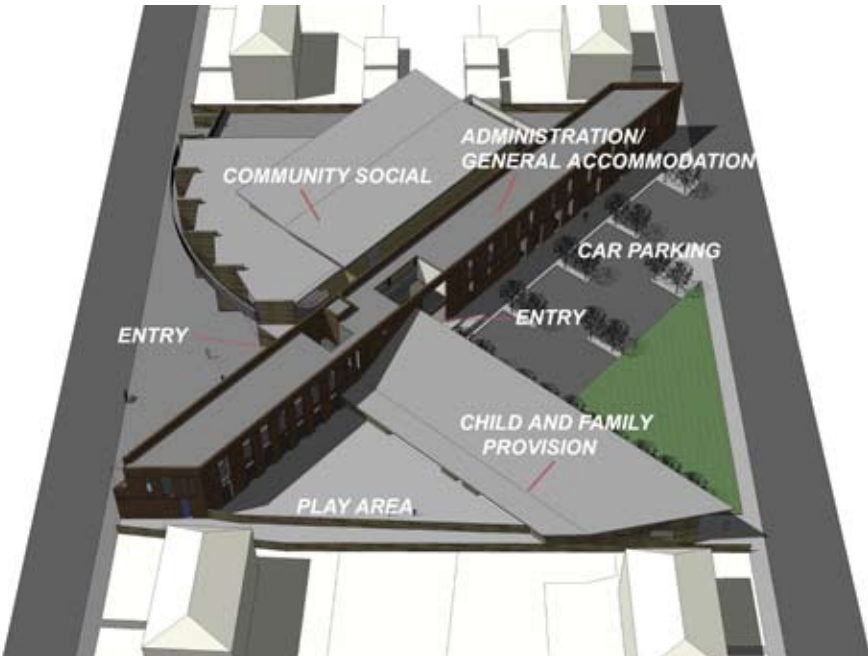
Royston Wardieburn Community Centre, Edinburgh

For the Co-ordinating Group/ Pilton Partnership

This feasibility study for a new Community Centre to replace the existing building formed part of an area wide strategy for major social, education and housing improvements within Royston Wardieburn.

Pilton Partnership - a Social Inclusion Partnership – formed a Co-ordinating Group (including the local councillor and representatives from social work, community education, Pilton Partnership, the Health Board and the community) to act as Client.

ARCADE developed the brief for the new building in consultation with a wide range of local groups and organisations including the existing community centre staff, Granton Child and Family Centre, local primary schools, the Health Board, the Police and Planning and Transportation. Workshops were also held with local residents. Developed proposals were consulted on within the community and a preferred option for the Centre was identified. Following completion of the study, additional funding was sought to allow the project itself to proceed.



ARCADE
ARCHITECTS
www.arcadearchitects.com

Quantity Surveyor: David Adamson