



Mossman Houses, Merchiston Mews, Edinburgh

For Private Clients

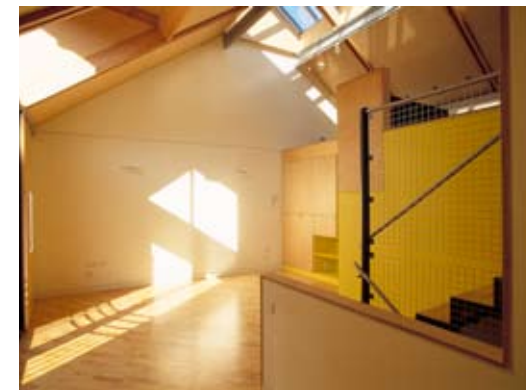
The Clients had owned three single storey garages in the Mews for a number of years and wanted to retire from the country. They were looking for a pair of new mews houses to replace the garages, to provide a house for themselves and another to let out.

The main design move is in the interior cross section so as to maximise the accommodation and create spacious and exciting living spaces within this relatively constricted site.

The principal living spaces are arranged on split levels under a top lit pitched roof, with bedrooms, ensuite bathrooms and garages lying on the levels below. The building presents an entrance frontage in stone on Merchiston Mews and a rendered frontage to Dorset Place.

During the design phase an energy assessment was carried out so as to optimise insulation, boiler type and glazing.

The project won the award for Best Domestic Project in the Scottish Design Awards, Best Small House in the Daily Telegraph Self Build Awards, was Commended in the Dynamic Places Award, and won a Saltire Society Housing Design Award. It was one of five finalists for the prestigious RIAS Award for the best building in Scotland.



Structural Engineer: Wren & Bell
Quantity Surveyor: J M Bishop FRICS

ARCADE
ARCHITECTS
www.arcadearchitects.com