

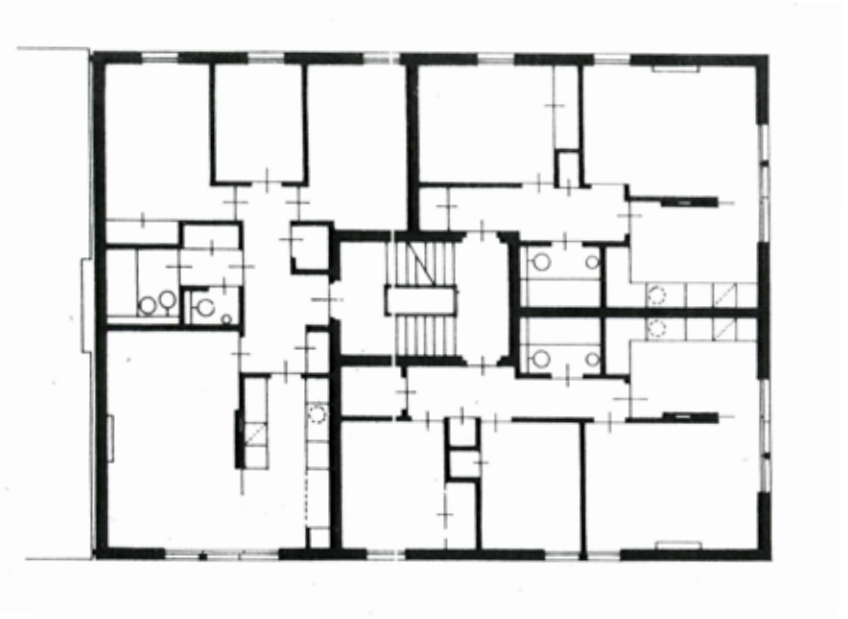
Lyne Street, Edinburgh,

for Culdion Housing Association Ltd

This new block of 15 flats for rent for special needs is set in a gap site in an existing tenemental area. The design was developed by working closely with the Housing Association and the end users.

It maximises the superb views of Arthur Seat and the excellent southern aspect and at the same time complements the adjacent buildings and completes the street. Internally the use of sliding partitions between the kitchens and living rooms increases flexibility and user choice.

The project was awarded a Commendation in the Saltire Society Housing Design Awards 1994, with an accompanying award for construction quality from the CIOB going to the contractor, Russell Construction Ltd.



Structural Engineer: Wren & Bell
Quantity Surveyor: Thomas & Adamson

ARCADE
ARCHITECTS
www.arcadearchitects.com