

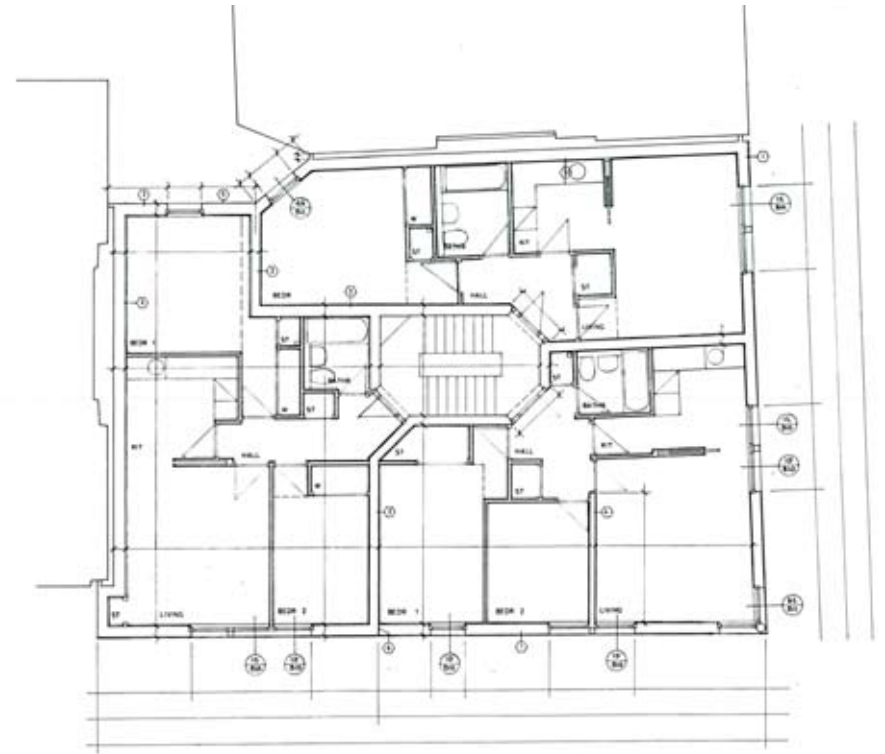
Iona Street, Edinburgh, For Lorne Area Housing Association



This new block of 12 flats for rent completes a corner gap site in the Lorne area of the city. ARCADE identified the site for this project and introduced the developer to the Housing Association.

The building makes a feature of the corner and matches the scale of the existing Victorian tenements, whilst providing bright and airy flats for the residents.

Design/Build Contract with Housing Association in partnership with Developer.



Structural Engineer: Wren & Bell

ARCADE
ARCHITECTS

www.arcadearchitects.com